



LIBRARY

CITY OF NEW BRAUNFELS
PROPOSED
BOND 2023



LIBRARY – STAFF PRIORITY FACTORS

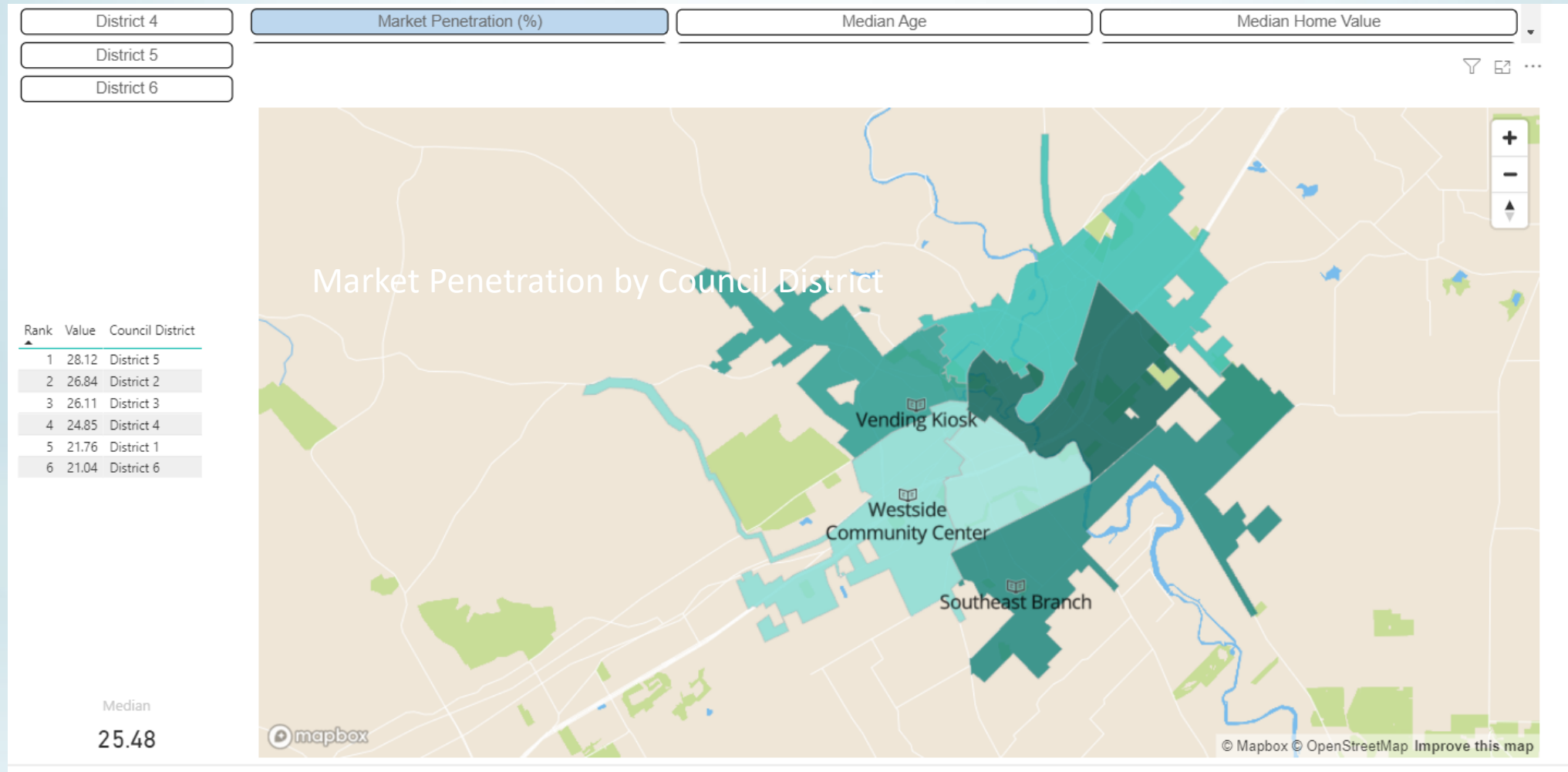
Early Literacy programming is our top priority

Increase service to underserved parts of the city

Presence in Guadalupe County

Meet the .6 square feet per capita standard

Library Market Penetration by Council District



LIBRARY – PRIORITY RANKING

Priority	Project	Estimated Cost
1	Southeast Branch 	\$20,123,000
2	Main Library Expansion	\$41,993,000
	Total Library Projects	\$62,116,000

*Indicates previous or ongoing project work



1. SOUTHEAST BRANCH LIBRARY



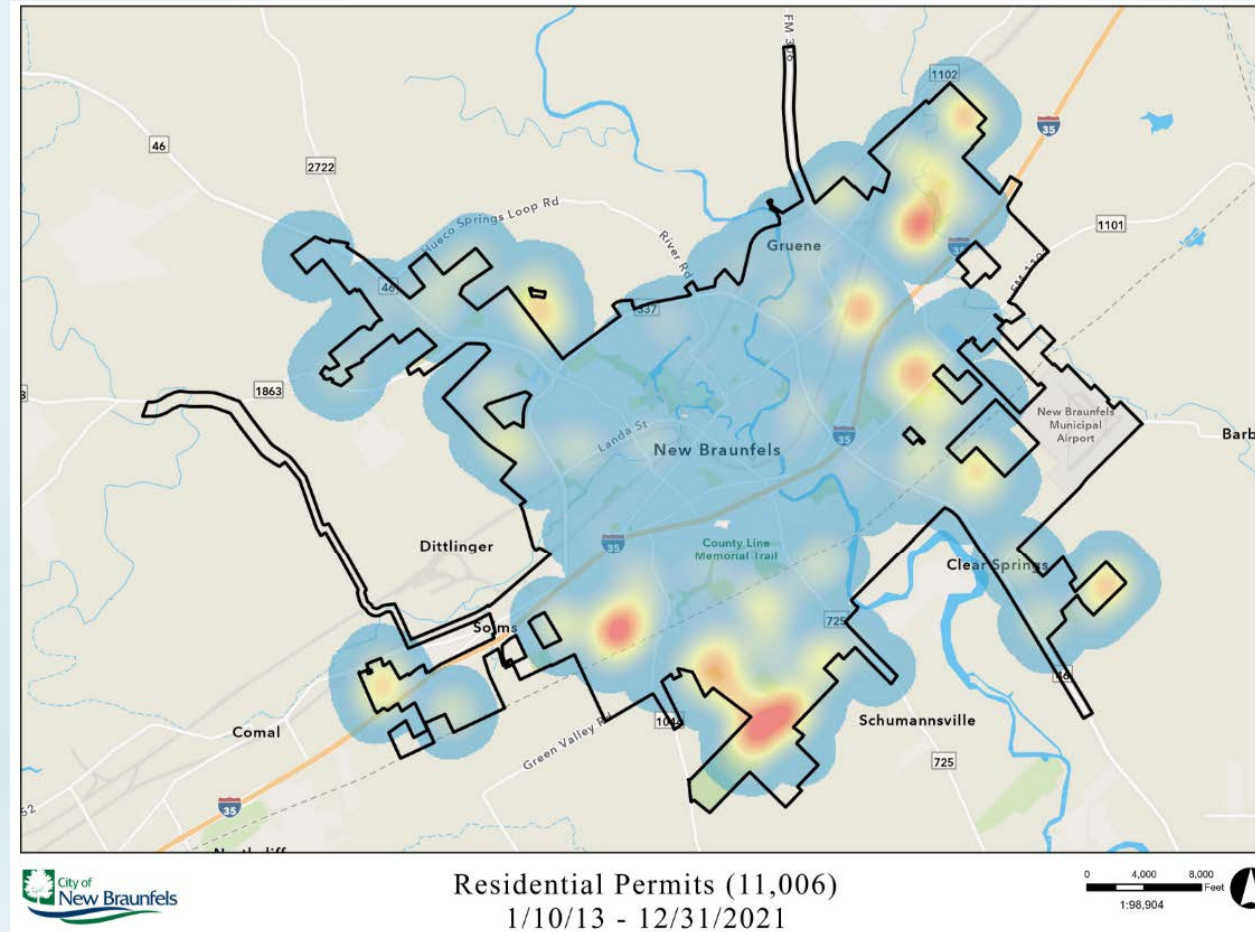
Project objectives

Add a branch library to the existing library system to serve the fastest growing area in the city - South of the Guadalupe River and east/south of IH 35. The branch would have a strong youth and family focus and would be located in Guadalupe County and serve the 6 schools within walking distance. This project is a continuation of ongoing engineering work.

Project scope

The New Braunfels Southeast Branch Library is a 23,250-square foot building that is site and community responsive. The library will feature a large public plaza, garden space, café services, restrooms, book sales. Additionally, the library will include a variety of rooms for quiet study and meeting. The Library Staff areas have views to the outside as well as a service window to better serve the public.

1. SOUTHEAST BRANCH LIBRARY



1. SOUTHEAST BRANCH LIBRARY



Risks and constraints

Area is growing fast, and a desirable parcel may be hard to find the longer the project is wait-listed.

Projects costs

\$20M Total Cost | \$17.6M Construction | \$2.3M Additional Costs

Project and preliminary design considerations

Schematic design was completed as part of the 2019 bond effort.

2. MAIN LIBRARY EXPANSION, OUTDOOR PROGRAMS, AND GARDEN AREA

Project objectives

This project will expand the main library, which will allow the library to provide more meeting spaces, add additional collections, and improve user experiences. Additionally, this expansion will improve efficiency and functionality in staff work areas. This project would also include outdoor improvements that would help align the library with nutritional literacy programming and provide opportunities for outdoor program presentation.

Project scope

Indoor Phase: The indoor portion of this project includes a 33,000 square foot expansion, new seating, expanded room capacity, and new shelving.

Outdoor Phase: The outdoor portion of this project includes the construction of an outdoor stage or pavilion for outdoor program presentation. A community garden with raised beds is also planned for the outdoor additions.

2. MAIN LIBRARY EXPANSION, OUTDOOR PROGRAMS, AND GARDEN AREA

Main library facilities do not meet the programming needs of the community

Outdoor areas would add additional program space and community services

*Transition building to the center of a library system
– support service focus*

2. MAIN LIBRARY EXPANSION, OUTDOOR PROGRAMS, AND GARDEN AREA

Risks and constraints

Full funding may not be available.

Projects costs

\$42M Total | \$40.5M Construction | \$1.4M Additional Costs

Project and preliminary design considerations

Design allows for the library to remain open during the majority of the project.

PROPOSED MEETING SCHEDULE

Tuesday, January 18, 2022

Kick-Off

6:30pm, Civic Center

Monday, January 31, 2022

Community Needs, Survey, & Project Overview

6:00pm, Civic Center

Monday, February 7, 2022

Library, Transportation, & Drainage/Watershed

6:00pm, Civic Center

Monday, February 21, 2022

Parks, Public Safety, & Economic Dev

6:00pm, Courtyard by Marriott, 750 IH 35 North

Saturday, February 26, 2022

Projects Tour

10:00am, City Hall

Monday, March 7, 2022

Public Input & Project Discussion

6:00pm, Civic Center

Monday, March 21, 2022

Project Priority

6:00pm, Civic Center

Monday, April 4, 2022

Recommendations for Prelim Design

6:00pm, TBD



CITY OF NEW BRAUNFELS
PROPOSED
BOND 2023

QUESTIONS?

