



COVID-19 (CORONAVIRUS)

- EFFECTIVE UNTIL FURTHER NOTICE -

STAY HOME, WORK SAFE ORDER

EVERY PERSON WITHIN THE CITY OF NEW BRAUNFELS SHALL MINIMIZE SOCIAL GATHERINGS, AND IN-PERSON CONTACT WITH PEOPLE WHO ARE NOT IN THE SAME HOUSEHOLD, EXCEPT WHEN NECESSARY TO PROVIDE OR OBTAIN ESSENTIAL SERVICES, OR NON-ESSENTIAL SERVICES USING CURBSIDE OR HOME DELIVERY.

ENFORCEABLE BY:

FIRE MARSHALS, PARK RANGERS, HEALTH AND BUILDING INSPECTORS, CODE COMPLIANCE OFFICERS, ANIMAL CONTROL OFFICERS, AND POLICE

WHAT YOU CAN DO

- **STAY HOME**
- **TRAVEL TO WORK**
- **WORK FROM HOME**
- **GET GROCERIES & GAS**
- **EXERCISE OUTDOORS**
- **ORDER TAKE-OUT/DELIVERY**
- **KEEP YOUR SOCIAL DISTANCE (6 FEET)**
- **PICK UP A NEW HOBBY**
- **CALL FRIENDS & FAMILY**

WHO CAN HELP

CITY OF NEW BRAUNFELS
(830) 221-4222
MONDAY-FRIDAY, 8 TO 5

COMAL COUNTY NURSE LINE
(830) 221-1120

RESIDENT RESOURCE CENTER
(830) 606-9512

STATE OF TEXAS
HEALTH DEPARTMENT
DIAL 211



COVID-19
(CORONAVIRUS)

CITY SERVICES & FACILITIES

Currently closed to the public:

***DAS REC
PUBLIC LIBRARY
WESTSIDE COMMUNITY CENTER
BULK & GREEN WASTE PICKUP
CIVIC/CONVENTION CENTER
PARKS ADMIN OFFICE***

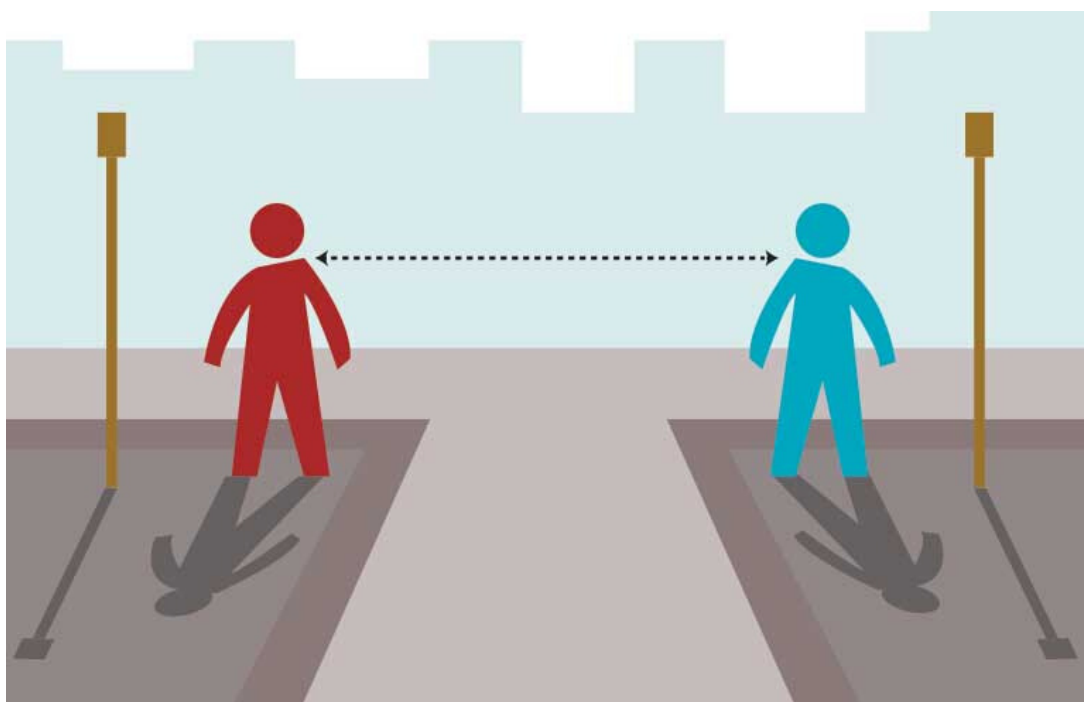
River Parks that are currently
closed to the public:

***PRINCE SOLMS PARK, CYPRESS BEND
PARK, HINMAN ISLAND PARK,
RIVER ACRES PARK, LAST TUBER'S EXIT,
BOY SCOUT HUT, FAUST STREET BRIDGE***

We kindly ask that you help keep our community healthy by practicing all guidelines from the Centers for Disease Control, including

Social Distancing

Keeping 6 feet from any other persons





COVID-19 (CORONAVIRUS)

FREQUENTLY ASKED QUESTIONS

Can a non-essential business provide products or services using curbside pick-up or home delivery?

Yes. Under the Supplemental Order issued March 27th, this is now allowed.

How does this impact taverns and restaurants?

All bars, taverns, lounges, and clubs are required to close. Restaurants can be open only if they are operating through delivery, curbside, carry out, or drive through. Indoor and outdoor dining is not permitted.

Can I still get food from my favorite restaurant?

Yes, if the restaurant is open and providing curbside, delivery, carry out, or drive through options.

I work for a delivery food service; can I still operate?

Yes, if you are adhering to social distancing rules.

Can I still go to a City Park?

Yes, except for certain River Parks, City parks are open to the public, however, playground equipment and restroom facilities are closed. Trails are still open so long as you adhere to social distancing of six feet.

Can I set up playdates with my kid's friends?

No, to help stop the spread of the virus, please remain home.

Can I have friends over for a small get-together?

No, to help stop the spread of the virus, please remain home and avoid gathering with others outside your household.

Is there a curfew in place?

No, not at the moment.

QUESTIONS? CALL THE HOTLINE (830) 221-4222



COVID-19 (CORONAVIRUS)

FREQUENTLY ASKED QUESTIONS

What should I do if I feel sick?

Contact your healthcare provider. If you do not have a provider, contact the Comal County Nurse at (830) 221-1120.

Can I get COVID-19 from food or beverages?

COVID-19 is NOT a foodborne illness and one cannot be infected through ingestion of food.

How does COVID-19 spread?

COVID-19 is spread through droplets that are aerosolized by a sneezing or coughing event and inhaled or land on a surface that someone touches and then rubs their eyes or nose.

Is the Farmer's Market still open?

Yes, farmer's markets are considered exempt.

Where can I report order violations?

For food related, call 830-221-4070
For non-essential businesses/people, call 830-221-4074

Do restrooms in exempt businesses need to remain open for the customers?

Yes, the establishments must allow customers to use the restrooms. Operators may lock the doors and require permission for use.

What is social distancing? And why, 6 feet?

Social distancing is a strategy recommended by the Center for Disease Control to prevent community spread of a pandemic. Coughing or sneezing events can send droplets with the virus into the air up to 6 feet away.

Can I go outside to exercise and walk the dog?

Yes, adhering to social distancing.

Are pet grooming facilities open?

Grooming facilities must be closed to the public, however, they can provide curbside pick-up to retrieve and deliver your pet.

Can I donate blood if I'm healthy?

Yes. Blood centers need healthy donors. Call ahead to schedule.

QUESTIONS? CALL THE HOTLINE (830) 221-4222



COVID-19 (CORONAVIRUS)

FREQUENTLY ASKED QUESTIONS

Can I receive a citation for breaking the stay home, stay safe order?

Yes. Violations of these regulations may result in a fine not less than \$50 and not more than \$2000.

Do I need to give my staff a letter stating that they are an employee of mine and we are considered an exempt business or is the City issuing a document for exempt business employees?

No. Employees of exempt businesses can travel to and from work without any city required documentation. The police are not pulling people over to ask about the reasons for travel.

Where can I report price gouging?

Contact the Texas Attorney General at (800) 621-0508

Where can I find a copy of this order and its supplemental order?

It is posted on the City website at www.nbtexas.org/covid-19

I live in Comal or Guadalupe County, but not in the city limits. Does this order apply to me?

No, it does not. You are subject to any proclamations, orders, or guidance documents issued by the county judges of each respective county.

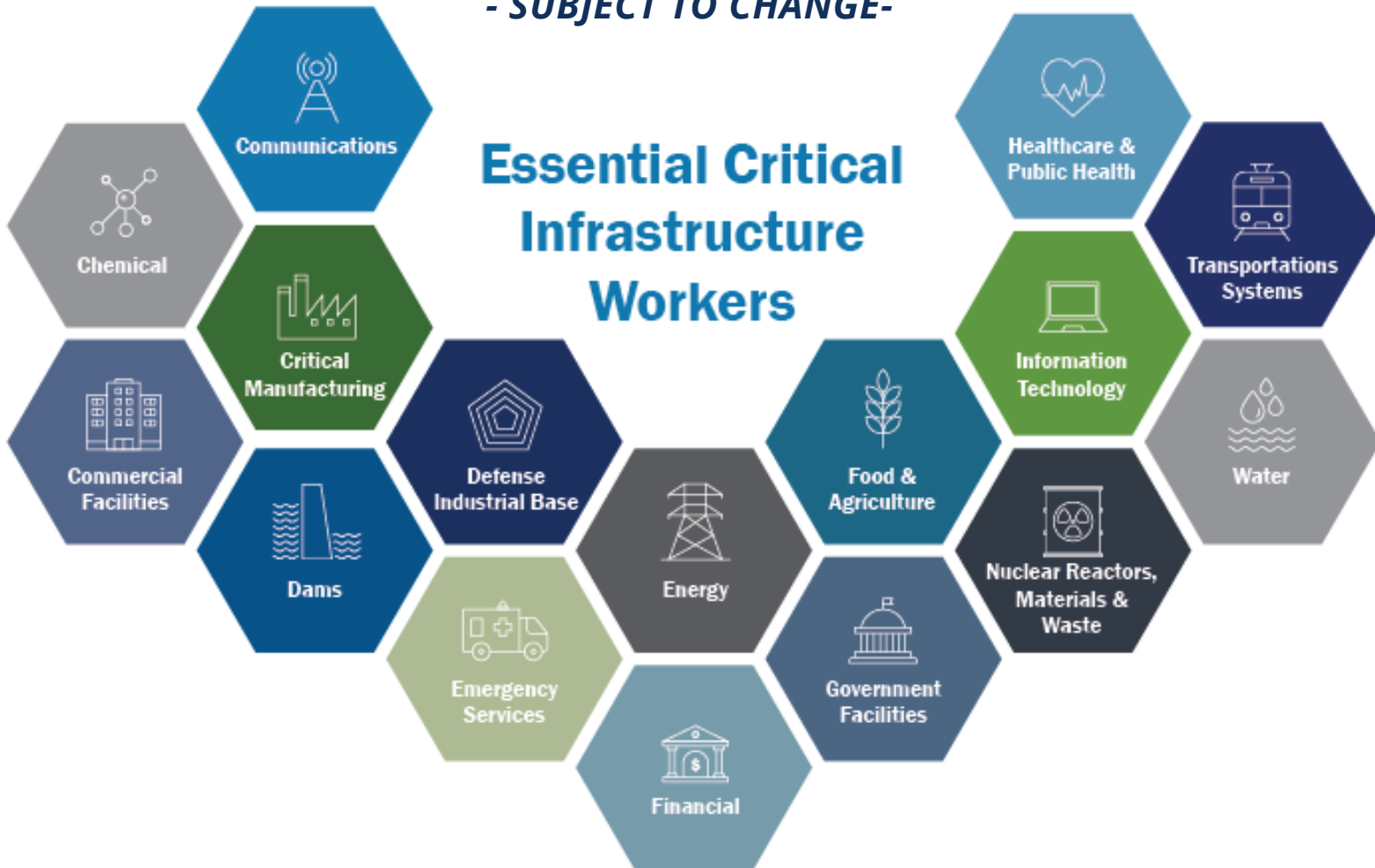
Does this order apply to anyone with a New Braunfels address?

Not necessarily. This order is only applicable to businesses and residents within the city limits.

QUESTIONS? CALL THE HOTLINE (830) 221-4222

ESSENTIAL SERVICES

*AS DEFINED BY GOVERNOR ABBOTT'S EXECUTIVE ORDER GA-14
- SUBJECT TO CHANGE-*



ADDITIONAL NOTICES

SCHOOLS SHALL REMAIN TEMPORARILY CLOSED TO IN-PERSON CLASSROOM ATTENDANCE AND SHALL NOT RECOMMENCE BEFORE MAY 4, 2020.

IF RELIGIOUS SERVICES CANNOT BE CONDUCTED FROM HOME OR THROUGH REMOTE SERVICES, THEY SHOULD BE CONDUCTED CONSISTENT WITH THE GUIDELINES FROM THE PRESIDENT AND THE CDC.

QUESTIONS? CALL THE HOTLINE (830) 221-4222



COVID-19 (CORONAVIRUS)

NON-ESSENTIAL SERVICES

REQUIRED TO CLOSE TO THE PUBLIC - SUBJECT TO CHANGE

- Barbershops and Hair Salons
- Spas, Massage, and Nail Salons
- Bars, Lounges, and Taverns
- Commercial amusement and entertainment establishments, such as: bowling alleys, theaters, indoor jumping centers
- Fitness Studios such as: Gyms, Fitness Classes, Yoga, Personal Training, etc.
- Hotel Meeting Spaces, Ballrooms and Event Centers
- IV Bars
- Tattoo and Piercing Shops
- Tube Rentals
- Zoos

CURBSIDE/DELIVERY ALLOWED

***ALL NON-ESSENTIAL BUSINESSES THAT SELL PRODUCTS
CAN DO CURBSIDE PICK-UP OR HOME DELIVERY - SUBJECT TO CHANGE***

Common Examples Include:

- CBD, Vape Shops, and Tobacco Shops/Retailers
- Pet Groomers
- Non-Essential Household Retail
- Furniture and Antique Stores
- Florists

QUESTIONS? CALL THE HOTLINE (830) 221-4222