

Exhibit L

to Development Agreement

Regional Stormwater Facility Easement Property

The 70.0 acres described in the attached metes and bounds description and depicted on the attached illustration.

FIELD NOTES
FOR AN
EASEMENT PROPERTY

70.0 acres, more or less, out of the J.M. Veramendi Survey No. 2, Abstract 3, Comal County, Texas. Said 70.0 acres also being a portion of a 2086 acre tract of land described as First Tract in Deed recorded in Volume 167, Pages 80-92 of the Deed Records of Comal County, Texas. Said 70.0 acre tract being more fully described as follows with bearings being based on the North American Datum of 1983 (CORS 1996), from the Texas Coordinate System established for the South Central Zone:

BEGINNING: At a point from which a found ½" iron rod on the southwest right-of-way line of River Road, for an eastern corner of said 2086 acre tract and the north corner of a 9.839 acre tract described in Document Number 200406026508 of the Official Records of Comal County, Texas, bears South 68°23'16" East, a distance of 2919.24 feet;

THENCE: Over and across said 2086 acre tract the following bearings and distances:

South 20°28'40" West a distance of 1036.94 feet to a point,

North 57°07'53" West a distance of 163.17 feet to a point,

South 57°28'24" West a distance of 114.83 feet to a point,

North 79°24'42" West a distance of 82.73 feet to a point,

South 79°57'25" West a distance of 595.53 feet to a point,

South 67°28'53" West a distance of 600.20 feet to a point,

South 41°43'37" West a distance of 181.68 feet to a point,

North 57°07'51" West a distance of 91.15 feet to a point,

North 84°18'21" West a distance of 135.99 feet to a point,

North 48°49'35" West a distance of 93.22 feet to a point,

North 05°07'49" East a distance of 289.31 feet to a point,

South 79°07'07" West a distance of 263.28 feet to a point,

South 13°27'35" West a distance of 371.59 feet to a point,

South 30°38'25" West a distance of 117.63 feet to a point,

South 07°01'13" East a distance of 151.40 feet to a point,
South 15°53'01" West a distance of 96.93 feet to a point,
North 76°17'06" West a distance of 178.09 feet to a point,
North 06°37'49" East a distance of 305.86 feet to a point,
North 16°17'15" West a distance of 164.98 feet to a point,
North 06°06'01" East a distance of 112.66 feet to a point,
North 44°17'34" West a distance of 133.16 feet to a point,
North 09°01'47" West a distance of 77.86 feet to a point,
South 87°42'53" West a distance of 143.36 feet to a point,
North 33°30'50" East a distance of 133.48 feet to a point,
North 41°49'24" East a distance of 219.13 feet to a point,
North 35°03'34" East a distance of 153.33 feet to a point,
North 46°59'09" East a distance of 178.14 feet to a point,
North 63°56'54" East a distance of 162.91 feet to a point,
North 40°38'34" East a distance of 214.07 feet to a point,
North 33°00'00" West a distance of 87.28 feet to a point,
North 66°09'37" East a distance of 108.03 feet to a point,
North 62°47'23" East a distance of 39.97 feet to a point,
North 22°11'18" East a distance of 144.79 feet to a point,
North 69°22'25" East a distance of 289.18 feet to a point,
Along a tangent curve to the right, said curve having a radius of 390.00 feet, a
central angle of 65°06'37", a chord bearing and distance of South 78°04'17"
East, 419.73 feet, for an arc length of 443.19 feet to a point,
South 47°26'22" East a distance of 168.63 feet to a point,
South 75°45'49" East a distance of 132.08 feet to a point,
South 71°54'01" East a distance of 121.26 feet to a point,

North $66^{\circ}16'22''$ East a distance of 280.00 feet to a point,

North $23^{\circ}43'38''$ West a distance of 95.41 feet to a point, and

Along a non-tangent curve to the right, said curve having a radial bearing of South $45^{\circ}17'25''$ East, a radius of 577.00 feet, a central angle of $102^{\circ}52'27''$, a chord bearing and distance of South $83^{\circ}51'12''$ East, 902.34 feet, for an arc length of 1036.00 feet to the POINT OF BEGINNING, and containing 70.0 acres.

This document was prepared under 22 TAC 663.21, does not reflect the results of an on the ground survey, and is not to be used to convey or establish interests in real property except those rights and interests implied or established by the creation or reconfiguration of the boundary of the political subdivision for which it was prepared.

PREPARED BY: PAPE DAWSON ENGINEERS, INC.
DATE: March 23, 2012
JOB No.: 9127-10
FILE: N:\Survey10\10-9100\9127-10\WORD\70.0 AC DAM MBs.doc



FIELD NOTES
FOR AN
ACCESS EASEMENT AREA

Being 1.6 acres, more or less, out of the J.M. Veramendi Survey No. 2, Abstract 3, Comal County, Texas. Said 1.6 acres also being a portion of a 2086 acre tract of land described as First Tract in Deed recorded in Volume 167, Pages 80-92 of the Deed Records of Comal County, Texas. Said 1.6 acre tract being more fully described as follows with bearings being based on the North American Datum of 1983 (CORS 1996), from the Texas Coordinate System established for the South Central Zone:

BEGINNING: At a point on the southwest right-of-way line of River Road on the north line of said 2086 acre tract from which a found ½" iron rod at an eastern corner of said 2086 acre tract and the north corner of a 9.839 acre tract described in Document Number 200406026508 of the Official Records of Comal County, Texas, bears South 34°57'13" East, a distance of 1409.44 feet;

THENCE: Over and across said 2086 acre tract the following bearings and distances:

South 39°42'59" West a distance of 78.11 feet to a point,

South 18°01'59" West a distance of 333.16 feet to a point,

South 60°45'13" West a distance of 115.45 feet to a point,

Along a non-tangent curve to the right, said curve having a radial bearing of South 60°45'13" West, a radius of 180.00 feet, a central angle of 67°41'51", a chord bearing and distance of South 04°36'09" West, 200.52 feet, for an arc length of 212.68 feet to a point,

South 38°27'04" West a distance of 736.84 feet to a point,

South 51°41'37" West a distance of 189.98 feet to a point,

South 42°15'02" West a distance of 364.14 feet to a point,

Along a tangent curve to the right, said curve having a radius of 150.00 feet, a central angle of 75°13'35", a chord bearing and distance of South 79°51'50" West, 183.10 feet, for an arc length of 196.94 feet to a point,

North 62°31'22" West a distance of 245.16 feet to a point,

North 51°35'19" West a distance of 221.31 feet to a point,

North 23°06'41" West a distance of 163.06 feet to a point,

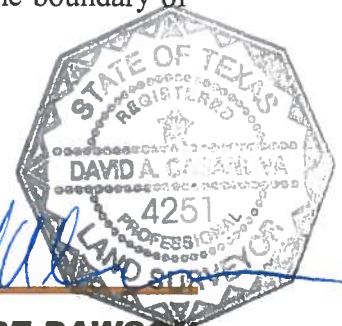
North 82°30'55" West a distance of 128.65 feet to a point,

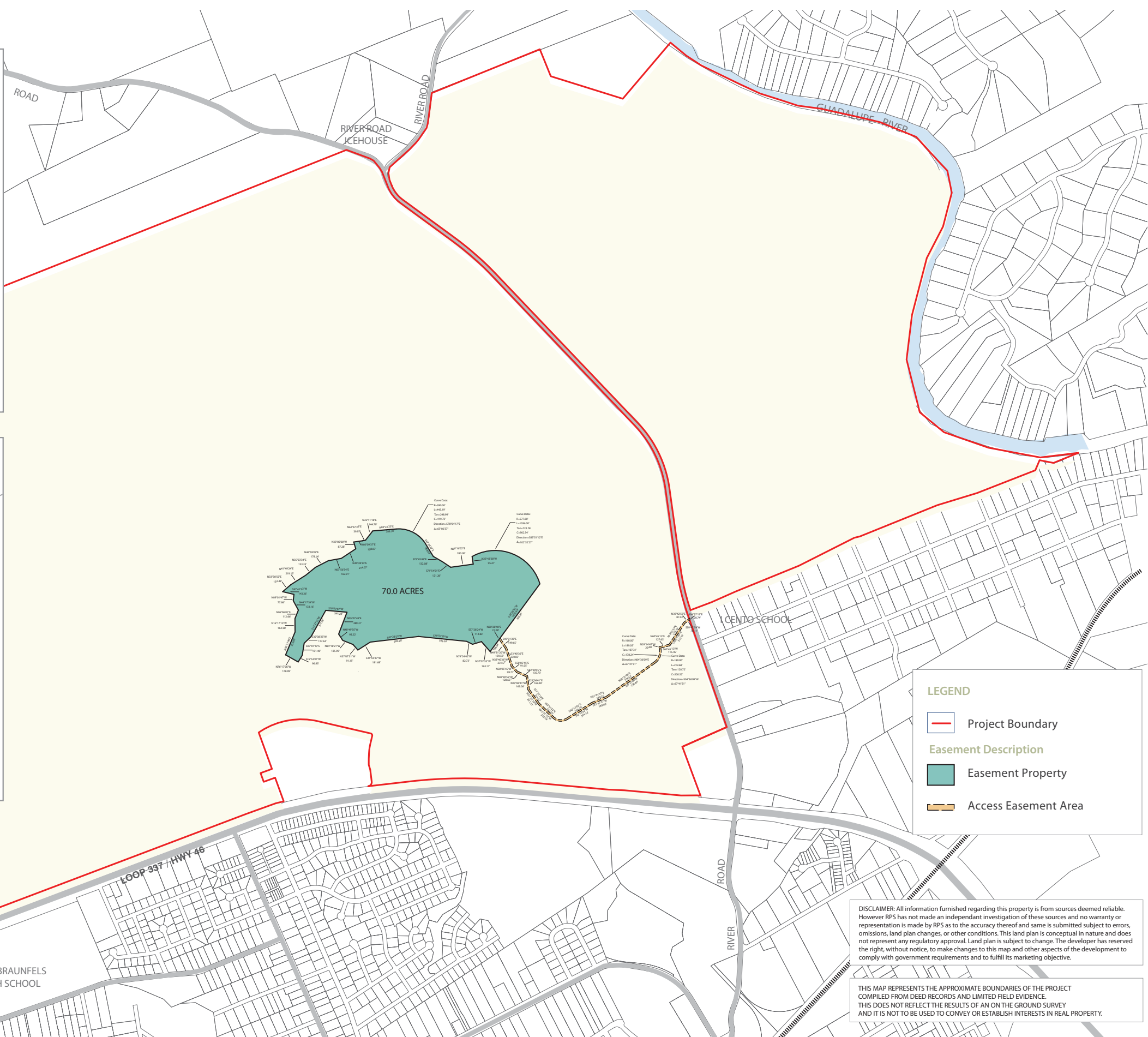
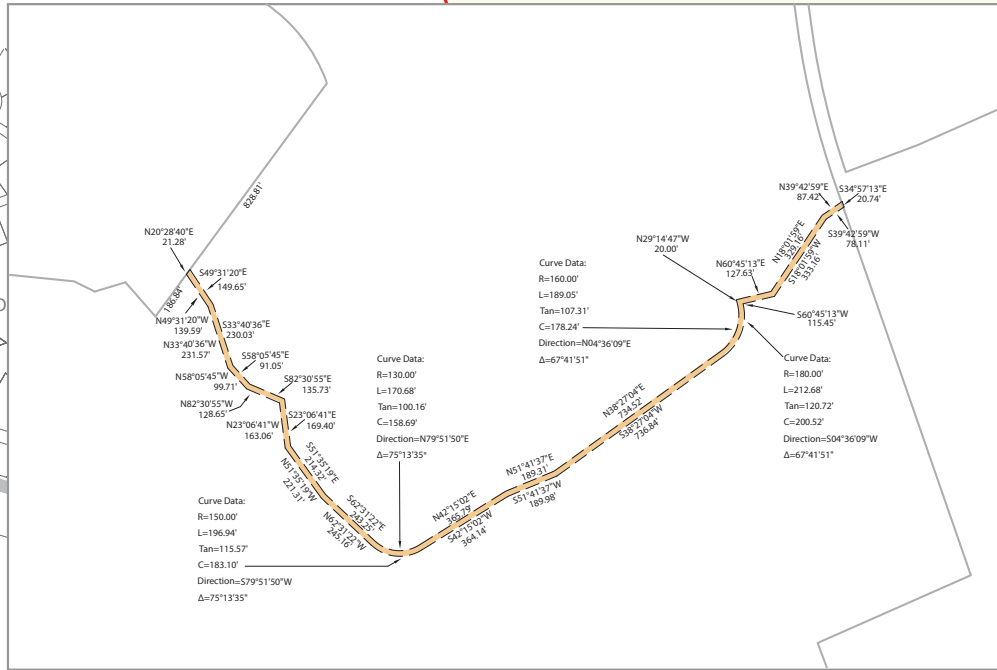
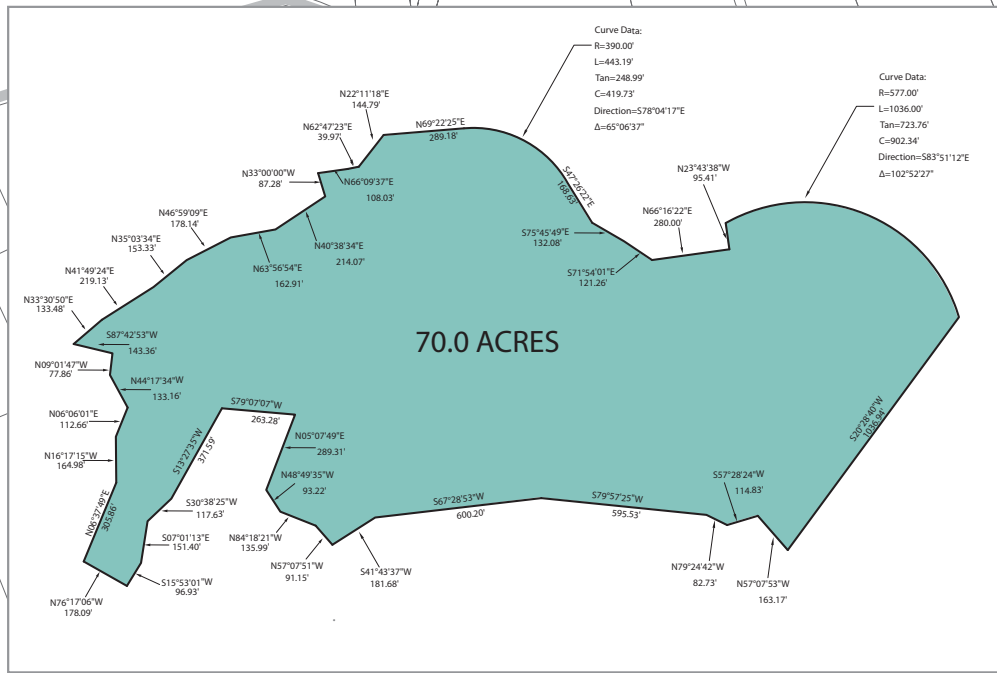
North 58°05'45" West a distance of 99.71 feet to a point,

North 33°40'36" West a distance of 231.57 feet to a point,
North 49°31'20" West a distance of 139.59 feet to a point,
North 20°28'40" East a distance of 21.28 feet to a point,
South 49°31'20" East a distance of 149.65 feet to a point,
South 33°40'36" East a distance of 230.03 feet to a point,
South 58°05'45" East a distance of 91.05 feet to a point,
South 82°30'55" East a distance of 135.73 feet to a point,
South 23°06'41" East a distance of 169.40 feet to a point,
South 51°35'19" East a distance of 214.32 feet to a point,
South 62°31'22" East a distance of 243.25 feet to a point,
Along a tangent curve to the left, said curve having a radius of 130.00 feet, a
central angle of 75°13'35", a chord bearing and distance of North 79°51'50"
East, 158.69 feet, for an arc length of 170.68 feet to a point,
North 42°15'02" East a distance of 365.79 feet to a point,
North 51°41'37" East a distance of 189.31 feet to a point,
North 38°27'04" East a distance of 734.52 feet to a point,
Along a tangent curve to the left, said curve having a radius of 160.00 feet, a
central angle of 67°41'51", a chord bearing and distance of North 04°36'09"
East, 178.24 feet, for an arc length of 189.05 feet to a point,
North 29°14'47" West a distance of 20.00 feet to a point,
North 60°45'13" East a distance of 127.63 feet to a point,
North 18°01'59" East a distance of 329.16 feet to a point,
North 39°42'59" East a distance of 87.42 feet to a point, and
South 34°57'13" East a distance of 20.74 feet to the POINT OF BEGINNING,
and containing 1.6 acres.

This document was prepared under 22 TAC 663.21, does not reflect the results of an on the ground survey, and is not to be used to convey or establish interests in real property except those rights and interests implied or established by the creation or reconfiguration of the boundary of the political subdivision for which it was prepared.

PREPARED BY: PAPE DAWSON ENGINEERS, INC.
DATE: March 23, 2012
JOB No.: 9127-10
FILE: N:\Survey10\10-9100\9127-10\WORD\1.6 AC SPLLY ACCS MBS.doc





DISCLAIMER: All information furnished regarding this property is from sources deemed reliable. However RPS has not made an independent investigation of these sources and no warranty or representation is made by RPS as to the accuracy thereof and same is submitted subject to errors, omissions, land plan changes, or other conditions. This land plan is conceptual in nature and does not represent any regulatory approval. Land plan is subject to change. The developer has reserved the right, without notice, to make changes to this map and other aspects of the development to comply with government requirements and to fulfill its marketing objective.

THIS MAP REPRESENTS THE APPROXIMATE BOUNDARIES OF THE PROJECT COMPILED FROM DEED RECORDS AND LIMITED FIELD EVIDENCE. THIS DOES NOT REFLECT THE RESULTS OF AN ON THE GROUND SURVEY AND IT IS NOT TO BE USED TO CONVEY OR ESTABLISH INTERESTS IN REAL PROPERTY.



Exhibit L Regional Stormwater Facility Easement Property