

Rueckle Road Reconstruction

Project Description

This project improves vehicular/pedestrian access to IH-35, road conditions and drainage in the rapidly developing east side of the city. Rueckle connects the Highland Grove development to IH-35. This project would reconstruct Rueckle Road from IH-35 to Morningside Drive. The 2012 Thoroughfare Plan classifies Rueckle Road as a parkway with up to 200-feet of right-way (which could accommodate up to seven lanes). The roadway will also include sidewalks on both sides and drainage improvements. Final configuration will be dependent upon engineering analysis.

Begin Design, Engineering

Begin Construction Phase

Estimated Completion

2013

2015

2017

Status

April 2014—First public meeting scheduled for May 8, 2014.

March 2014—Preliminary alignments are being developed and reviewed for public meeting(s).

January 2014—Survey and data collection continues. Geotechnical investigations are complete and lab testing is underway. Data collection for traffic engineering is underway. Field work for the environmental assessment completed.

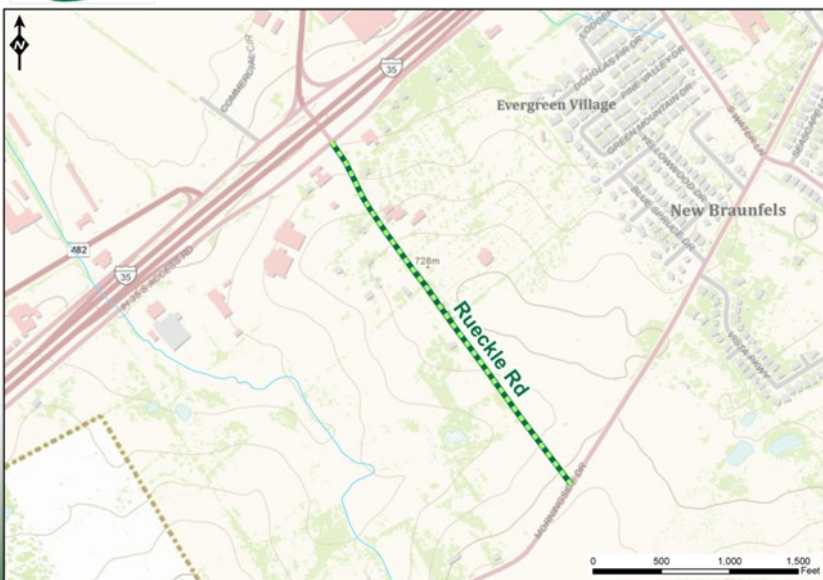
December 2013—Survey and geotechnical crews will conduct survey, data collection, and subsurface soil investigations for the design of the project. Survey crews will be locating existing infrastructure and mapping topography within the public right-of-way. Geotechnical crews will be sampling and documenting sub-surface soil conditions within the existing pavement section to analyze for a proposed pavement section for the project.

October 2013—City Council approved contract with Moeller & Associates for preliminary engineering and design services.

August 2013—Negotiating scope of services and fees for design services.



Rueckle Road Reconstruction



Project Manager Jennifer Cain
jcain@nbtexas.org 830-221-4646