

BULKY GOODS DROP-OFF

SPECIAL SERVICES

- Quarterly, for residential ratepayers only. Call or visit website for dates.
- Photo ID and recent NBU/ GVEC utility bill required.
- All trailer loads must be taken to the landfill.

LOCATIONS

- New Braunfels High School: 2551 Loop 337
- Comal County Offices: 1297 Church Hill Drive
- Walnut Springs Elementary: 1900 South Walnut Avenue
- City Municipal Building: 424 South Castell Avenue

- Mesquite Creek Landfill, owned and operated by Waste Management: 1700 Kohlenberg Rd. (830) 625-7894
 - Only one load per resident, per event.
 - No tires or appliances.
 - All loads must be covered with a tarp.
 - Safety vest required for all vehicle occupants.

ACCEPTED ITEMS

- Appliances with Freon removed
- Scrap metal (hangers, etc)
- Furniture
- Mattresses
- Up to 10 whole passenger car tires, without rims, per resident (no scrap tires).

PROHIBITED ITEMS

- Chemicals, oil, paints, stains, and other Household Hazardous Waste
- Green Waste
- Bagged garbage
- TVs, computers, and other electronics
- Commercial garbage
- Appliances containing Freon

EXTRA CARTS

- A second garbage cart is available for a \$10 administrative fee plus \$6.50 per month for a minimum of four months.
- A second recycle cart is no charge.

EXTRA BAGGED GARBAGE

- City-issued “Excess Garbage Tag” required for collection.
- Purchase five tags for a fee at:
 - NBU Main Office: 263 Main Plaza
 - City Municipal Building: 424 South Castell Avenue

BULKY GARBAGE

- Bring to free, quarterly Bulky Goods Drop-Off.
- Schedule a special collection. Fees and restrictions apply.

RENT A DUMPSTER

Dumpsters of various volumes are available to rent for short-term projects. Fees and restrictions apply.

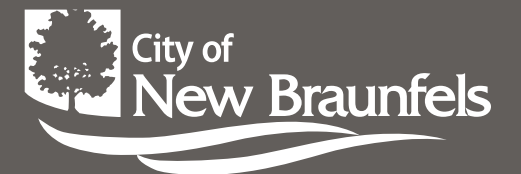
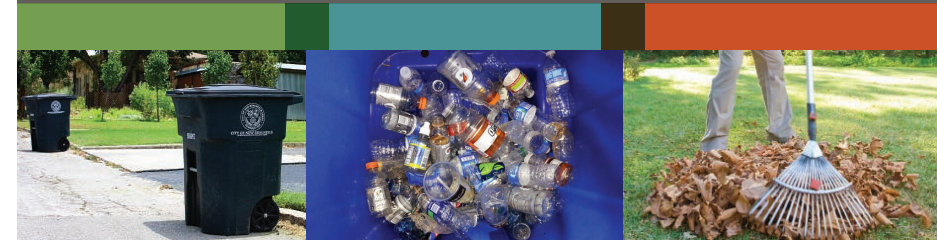
HAZARDOUS WASTE

Items marked toxic, poison, warning, flammable, corrosive, combustible, caution, or danger do not belong in your garbage or recycling cart. Call for collection information.

HOLIDAYS

No collection on Thanksgiving Day, Christmas Day, or New Year’s Day; collection on and after the holiday shifts by one day, within that week. On all other holidays, collection remains the same.

GARBAGE, & RECYCLING, & GREEN WASTE SERVICES



SOLID WASTE DIVISION

GREEN WASTE



GARBAGE



RECYCLING



- Use Green Waste paper bags only - no plastic bags
- Small branches must be cut into four-foot lengths and tied with rope or twine.
- Each bundle or bag must not weigh more than 40 pounds.
- Green Waste is collected curbside the same day as recycling; place at curb before 6:30 a.m. on collection day
- Mulch available at Comal County Recycling Center: 281 Resource Drive. Call 830-643-3781 for details.

ACCEPTED ITEMS

- Leaves
- Natural Christmas trees
- Twigs
- Grass clippings
- Garden trimmings

PROHIBITED ITEMS

- Soil
- Recyclables
- Cactus
- Building materials
- Rocks
- Trash
- Food waste
- Yucca plants
- Metals
- Palm trees or fronds

GREEN WASTE BAGS

- Library: 700 East Common Street
- City Recycle Center: 488 South Castell Avenue
- McKenna Gym: 801 West San Antonio Street
- NBU Main Office: 263 Main Plaza
- City Hall: 550 Landa St
- Landa Rec Center: 164 Landa Park Drive
(Labor Day to Memorial Day Only)

- Each home is issued one 96-gallon cart for garbage.
 - One additional cart can be requested, fees apply.
 - Bagged garbage outside the cart must have a City-issued "Excess Garbage Tag" to be collected.
 - A smaller cart is available upon request.
- All garbage must be bagged and cart lid closed.
- Place cart, wheels to curb, no later than 6:30 a.m. the day of collection.
 - Cart must be five feet from ALL other objects to be emptied
- Carts are property of the City - do not permanently mark. Address stickers are allowed.
- Report it: if a cart is lost, needs repair, or stolen.

PROHIBITED ITEMS

- Tires
- Construction debris
- Hot ashes or coals
- Bricks
- TVs and electronics
- Liquid wastes
- Green Waste
- Dead animals
- Soil
- Rocks
- Bulky appliances
- Flammable or combustible liquids or gasses



Download the My Waste smartphone App today, for free!



- Place blue cart, wheels against curb, no later than 6:30 a.m. the day of collection.
- Cart must be five feet from ALL objects to be emptied.
- Do not put recyclables in plastic bags: leave loose in cart.
- Carts are property of the City - do not permanently mark.
- Flatten boxes and cut into pieces no larger than 18 inches by 18 inches. Rinse containers.

ACCEPTED ITEMS

- Plastic containers #1-7, less than five-gallon volume
- Glass bottles and jars
- Aluminum cans
- Clean, dry paper: cardboard, newspaper, magazines, junk mail, catalogs, cereal boxes, phone books, etc.
- Steel and tin: food and beverage containers
- Shredded paper in a paper bag, stapled shut
- Dairy and juice cartons

PROHIBITED ITEMS

- Plastic bags, wrap, or film
- Ceramics or vases
- Styrofoam
- Drinking glasses
- Hangers or foil
- Tissues, paper towels, napkins
- Mirrors
- Wires, cords, and scrap metal
- Trash, including diapers

CITY RECYCLE CENTER

488 South Castell Avenue

Drop-off all "Accepted Items" above, plus scrap metal and plastic foam #6. Plastic foam must be separate, clean, and dry. NO helium or propane tanks, appliances with Freon, Green Waste or garbage

Open: Tuesday to Saturday,
8:00 a.m. - 12:00 p.m.
12:30 p.m. - 4:00 p.m.

Closed : Sunday, Monday, and City holidays

